

PROGRAM



Penn LDI

LEONARD DAVIS INSTITUTE *of* HEALTH ECONOMICS

2020 FALL KICKOFF

Wednesday, September 9, 2020
4:00–5:30 p.m. ET

4:00 p.m. • WELCOME

Rachel M. Werner, MD, PhD, Executive Director, Penn LDI

4:05 p.m. • WHO'S IN THE ROOM & RULES FOR LEONARD AWARDS

Pete Groeneveld, MD, MS, Director of Research, Penn LDI

4:15 p.m. • NEW SENIOR FELLOWS VIDEO PRESENTATIONS, PART 1

4:35 p.m. • LDI TRIVIA

Pete Groeneveld

4:50 p.m. • NEW SENIOR FELLOWS VIDEO PRESENTATIONS, PART 2

5:10 p.m. • VOTING FOR LEONARD AWARDS

5:25 p.m. • PRESENTATION OF LEONARD AWARDS

Tali Ruskin, MSW, MPH, Project Manager, Penn LDI

5:30 p.m. • CLOSING

Pete Groeneveld



George Dalembert, MD

Assistant Professor
Clinical Pediatrics
Perelman School of Medicine

George Dalembert, MD, MSHP is an attending physician in the Division of General Pediatrics at The Children's Hospital of Philadelphia (CHOP), Assistant Professor of Clinical Pediatrics at the Perelman School of Medicine, and a Faculty Scholar at CHOP PolicyLab. His interests include adolescent health, health equity, and increasing patient/family engagement in the primary care setting. He also engages in curricular design in implicit bias and quality improvement, as well as direct teaching in the inpatient, ambulatory, and classroom settings for residents and medical students. He received his MD from the University of Miami Miller School of Medicine, and completed his residency training at CHOP.



George Demiris, PhD, FACMI

Penn Integrates Knowledge Professor
Biobehavioral Health Sciences
School of Nursing

Penn Integrates Knowledge Professor
Epidemiology and Informatics
Perelman School of Medicine

George Demiris, PhD, FACMI is a Penn Integrates Knowledge (PIK) Professor in the School of Nursing Department of Biobehavioral Health Sciences and the Perelman School of Medicine Department of Epidemiology and Informatics. With a focus on the intersection of informatics and nursing science, his work has introduced new and innovative approaches to old problems in gerontology. His research explores technology-based solutions for supporting patients and their families in various settings, including home and hospice care. He also focuses on designing and evaluating personal health systems that produce patient-generated data. He received his PhD in Informatics at the University of Minnesota, and an MS at Ruprecht-Karls University in Heidelberg, Germany.



Nwamaka Eneanya, MD, MPH

Assistant Professor
Renal-Electrolyte Hypertension
Perelman School of Medicine

Nwamaka Eneanya, MD, MPH, FASN is an attending nephrologist and Assistant Professor of Medicine at the Perelman School of Medicine. She is a clinical investigator with research interests that center on palliative care, informed decision-making, and racial disparities among patients with advanced chronic kidney disease and end-stage kidney disease. She completed her nephrology training at the combined Nephrology Fellowship Program at Massachusetts General Hospital/ Brigham and Women's Hospital and residency in internal medicine at Brigham and Women's Hospital. She received her MD from Meharry Medical College, and MPH from the Harvard T.H. Chan School of Public Health.



Alexander Craig Fanaroff, MD, MHS

Assistant Professor
Cardiology
Perelman School of Medicine

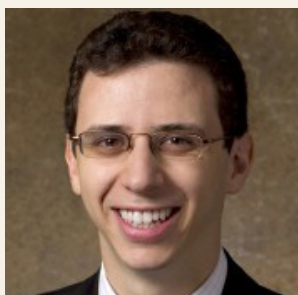
Alexander Fanaroff, MD, MHS is an interventional cardiologist and Assistant Professor of Medicine in the Division of Cardiology at the Perelman School of Medicine. His research focuses on identifying areas in which cardiovascular care is delivered inefficiently or variably, developing solutions to improve care delivery, and then testing those solutions in pragmatic clinical trials, with specific interests in intensive care unit utilization for patients with myocardial infarction, cardiac catheterization lab quality, and antithrombotic therapy for patients that have had percutaneous coronary intervention or myocardial infarction. He completed medical school, internal medicine residency, cardiology fellowship, and interventional cardiology fellowship at Duke University.



Dalmacio Dennis Flores, PhD, ACRN

Assistant Professor
Family and Community Health
School of Nursing

Dennis Flores, PhD, ACRN is Assistant Professor of Nursing in the School of Nursing, an affiliated faculty at the Gender, Sexuality, and Women's Program – The Alice Paul Center, and Visiting Professor at the Center for Research on AIDS at Yale University's School of Public Health. He has been involved in several studies focused on preventing HIV and STI transmission among sexual minority youth. His current research investigates the role of parents in the sexual health education of their adolescent sons who identify as gay, bisexual, and queer (GBQ). He earned his PhD from Duke University, and MSN from Emory University.



Ari B. Friedman, MD, PhD

Assistant Professor
Emergency Medicine
Perelman School of Medicine

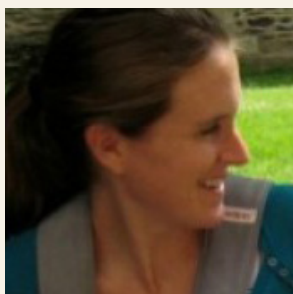
Ari Friedman, MD, PhD is Assistant Professor of Emergency Medicine at the Perelman School of Medicine, holds a secondary appointment in the Department of Medical Ethics and Health Policy, and is Core Faculty at the Center for Emergency Care Policy and Research. His research investigates the industrial organization of the unscheduled care system, access to care and insurance, and financial integration of population health into the medical system. He completed his MD at the Perelman School of Medicine, his PhD in Healthcare Management and Economics at the Wharton School, and his residency at the Harvard Affiliate Emergency Medicine Residency at Beth Israel Deaconess Medical Center.



Laura Gibson, PhD

Research Assistant Professor
Medical Ethics and Health Policy
Perelman School of Medicine

Laura Gibson, PhD is Research Assistant Professor of Medical Ethics and Health Policy at the Perelman School of Medicine. She joined the Psychology of Eating and Consumer Health (PEACH) Lab at the Perelman School of Medicine in 2018. Her research interests focus on how to make effective public health interventions with the capacity to improve the health of large numbers of people. She currently studies the impact of existing and potential nutrition policies on public health. Prior to joining the PEACH Lab, she was primarily involved in the development and evaluation of anti-tobacco mass media campaigns. She earned her PhD in Psychology at Harvard University.



Andi Johnson, PhD, MA

Senior Lecturer
History & Sociology of Science
School of Arts and Sciences

Andi Johnson, PhD is a Senior Lecturer in the History and Sociology of Science Department at the University of Pennsylvania. She specializes in the anthropology and history of science and medicine. Her research tracks the rise of exercise physiology in the U.S. from the 1920s and explores the transnational networks and practices through which exercise physiology travels today. She teaches undergraduates in the Health and Societies major and Science, Technology, and Society major at Penn. Subjects include the history of health insurance in the U.S.; the social basis of health and illness; and different ways of knowing in science and sport. She holds a PhD in Anthropology from the University of Pennsylvania.



Iliana V. Kohler, MA, PhD

Research Assistant Professor and Associate Director
Population Studies Center
School of Arts and Sciences

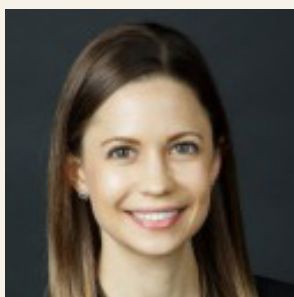
Iliana Kohler, PhD is a health researcher and social demographer whose research builds on both social and biomedical sciences, and whose primary research agenda focuses on adult health outcomes, chronic diseases, intergenerational relationships and transfers, and morbidity and mortality in international contexts. Most recently, she spearheaded the extension of the Malawi Longitudinal Study of Families and Health (MLSFH), towards research on aging, chronic diseases, and mortality in an African poor high HIV-prevalence context, and established the Mature Adults Cohort of MLSFH (MLSFH-MAC) in 2012. She holds a PhD in Political Science from the University of Southern Denmark, Odense.



Melanie Kornides, ScD, MPH, APRN

Assistant Professor
Family & Community Health
School of Nursing

Melanie Kornides, ScD, MPH, APRN is Assistant Professor of Nursing in the Department of Family and Community Health. Her research seeks to contextualize and address disparities in HPV vaccination uptake to improve coverage in the U.S. Her research portfolio on adolescent health includes epidemiological research, social media and digital interventions, and studies on healthcare provider communication. She received her ScD in Epidemiology from the Harvard T.H. Chan School of Public Health, and completed a postdoctoral fellowship in the Department of Population Medicine at Harvard Medical School and Harvard Pilgrim Health Care Institute.



Kristin Linn, PhD

Assistant Professor
Biostatistics, Epidemiology, and Informatics
Perelman School of Medicine

Kristin Linn, PhD is Assistant Professor, Biostatistics, Epidemiology, and Informatics at the Perelman School of Medicine. Her research program spans two broad areas: statistical methods for high-dimensional medical imaging data and sequentially randomized clinical trials. As a co-investigator, she provides biostatistical leadership on projects in psychiatry, dermatology and behavioral health economics. She works to develop statistical methods that improve understanding of the neurobiological mechanisms of psychiatric illnesses. She holds a PhD in Statistics from North Carolina State University.



Atsushi Mizuno, MD, PhD, MBA

Visiting Associate Professor of Medicine
Medicine
Perelman School of Medicine

Atsushi Mizuno, MD, PhD, MBA is Visiting Associate Professor of Medicine in the Perelman School of Medicine, chiefly engaged with research at the Penn Medicine Nudge Unit. He is also a cardiology faculty member at St. Luke's International Hospital and Associate Professor at St. Luke's International University. He has studied a diverse range of topics in cardiology, including catheterization interventions, adult congenital heart disease, coronary physiology, and palliative care for heart disease. His recent interests have shifted from clinical studies to studies that apply behavioral economics theory and business strategies to clinical situations. He received his MD from Kyoto University, his PhD in Cardiology from Juntendo University, and his MBA from GLOBIS University.



Anna Morgan, MD, MSc, MSHP

Assistant Professor of Clinical Medicine
General Internal Medicine
Perelman School of Medicine

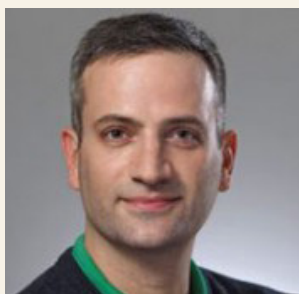
Anna Morgan, MD, MSc, MSHP is Assistant Clinical Professor at the Perelman School of Medicine and is Director of Care Management and Community Health for the Division of General Internal Medicine. Her work focuses on caring for complex and vulnerable patients to address the social determinants of health. She completed an MSc in Health, Population and Society from the London School of Economics and holds a MSHP from the University of Pennsylvania. She completed residency and chief residency in Internal Medicine at Harbor-UCLA Medical Center in Los Angeles and was a Robert Wood Johnson Clinical Scholar at the University of Pennsylvania.



Rebecca Stewart, PhD

Assistant Professor
Penn Center for Mental Health
Perelman School of Medicine

Rebecca Stewart, PhD is a licensed clinical psychologist and Assistant Professor at the Penn Center for Mental Health. She studies why substance use and mental health treatment agencies don't adopt evidence-based practices (EBPs), with the goal of identifying and testing strategies to increase adoption and enhance implementation. She is also interested in the effects of financial and other incentives to increase the use of EBPs in the community. In partnership with Community Behavioral Health, she has evaluated several novel services and payment models intended to improve access to care. She holds a PhD in Psychology from the University of Pennsylvania.



Gary Weissman, MD, MSHP

Assistant Professor
Pulmonary and Critical Care Medicine
Perelman School of Medicine

Gary Weissman, MD, MSHP is Assistant Professor in Pulmonary and Critical Care Medicine at the Perelman School of Medicine. His primary research group is the Palliative and Advanced Illness Research Center, where he uses clinical informatics methods to address population health management for patients with chronic lung diseases and with other serious illnesses. His research interests include the longitudinal pathways of critically ill patients through the health care system, the use of real-time alerts and predictive solutions to improve care in and out of the ICU, and the practice of low-resource critical care. He holds an MD from Jefferson Medical College, and completed a residency in internal medicine at the Hospital of the University of Pennsylvania.



Charlotte Woods-Hill, MD

Assistant Professor
Anesthesia and Critical Care
Children's Hospital of Philadelphia

Charlotte Woods-Hill, MD is Assistant Professor in Anesthesia and Critical Care at the Children's Hospital of Philadelphia. She serves as the divisional physician lead for harm prevention stemming from central-line associated bloodstream infections and departmental co-director of vascular access/infection prevention. Her areas of interest are the intersection of health care resource utilization, diagnostic stewardship, and implementation science, as it relates to preventable pediatric patient harm and pediatric patient safety. She received her MD from the University of South Florida College of Medicine, and completed residency training in general pediatrics at Harvard University/Boston University's Boston Combined Residency Program, and she holds a MSHP from the University of Pennsylvania.

