

PISCIE@LDI

**Penn Implementation Science Center
@ The Leonard Davis Institute**

YEAR-IN-REVIEW:
2019

Mission

To advance the science of implementation; train the next generation of implementation researchers; and to transform health and behavioral health services domestically and globally.

PISCE@LDI is the hub for implementation science research, training, and capacity building at the University of Pennsylvania

Letter From the Director

It is my great honor and pleasure to reflect on the first year of PISCE@LDI. I am very grateful to LDI, Penn CMH, and the MsHP program for their support in launching

PISCE@LDI. This year, we have built community by creating key opportunities to gather implementation scientists across the university. We continue to train the next generation of implementation scientists and to innovate around course offerings through our partnership with the Penn MsHP. In total, the implementation science portfolio included 25 active grants in the 2019 funding year between Penn and CHOP. I look forward to what 2020 will bring!



Rinad Beidas, PhD

Associate Professor

Departments of Psychiatry; Medical Ethics & Health Policy;
Medicine

Perelman School of Medicine

Founding Director, Penn Implementation Science Center at the
Leonard Davis Institute (PISCE@LDI)

Leadership: Internal Advisory Board



Rachel Werner, MD, PhD

Executive Director, Leonard Davis Institute of Health Economics (LDI)
Robert D. Eilers Professor, Health Care Management, Wharton School
Professor, Medicine, Perelman School of Medicine



David Mandell, ScD

Kenneth Appel Professor and Director, Penn Center for Mental Health
Vice Chair for Faculty Affairs, Department of Psychiatry,
Perelman School of Medicine



Meghan Lane-Fall, MD, MSHP

Assistant Professor, Anesthesiology and Critical Care,
Perelman School of Medicine



Alison Bittenheim, PhD, MBA

Associate Professor, Family and Community Health, School of Nursing
Associate Professor, Health Policy, Perelman School of Medicine



Ingrid Nembhard, PhD, MS

Fishman Family President's Distinguished Associate Professor,
Health Care Management, Wharton School



John R. Kimberly, PhD

Henry Bower Professor Emeritus, Health Care Management,
Wharton School



Raina M. Merchant, MD, MS

Associate Professor, Emergency Medicine, Perelman School of
Medicine
Director, Center for Digital Health, Perelman School of Medicine

2019 *At a Glance*

Membership:

- 240 total members, a >40% increase since the launch of PISCE@LDI in November 2018
- Members come from 7 schools and more than 33 different departments and institutes across the University of Pennsylvania

Events:

- We held six meetings in 2018-19; 17 people attended on average

Grants:

- 25 active NIH grants in FY 2019 between Penn and CHOP

Technical Assistance:

- ~60 internal and external requests for technical assistance in implementation science during a 6 month period

Training:

- We offered MsHP HPR 611 in Spring and Fall 2019
 - Total enrollment ~40 individuals
- We offered the MsHP Implementation Science Institute in Summer 2019 training 38 internal and external individuals

Events

2018-2019 Timeline

Late November, 2018

PISCE@LDI officially launches with new webpage & article. ISWG meetings become PISCE@LDI WIP

February 26th, 2019 – WIP

Chris Bonafide (CHOP) leads a conversation about deimplementation

April 2nd, 2019 – WIP

External speaker Lisa Saldana (OSLC) presents on the Stages of Implementation Completion for Evidence-Based Practice (SIC)



December 11th, 2018 – WIP

External speaker Jonathan Purtle (Drexel) presents RWJF grant, “Testing Strategies to Communicate Evidence about Toxic Stress While Minimizing Stigma towards Children and Families”



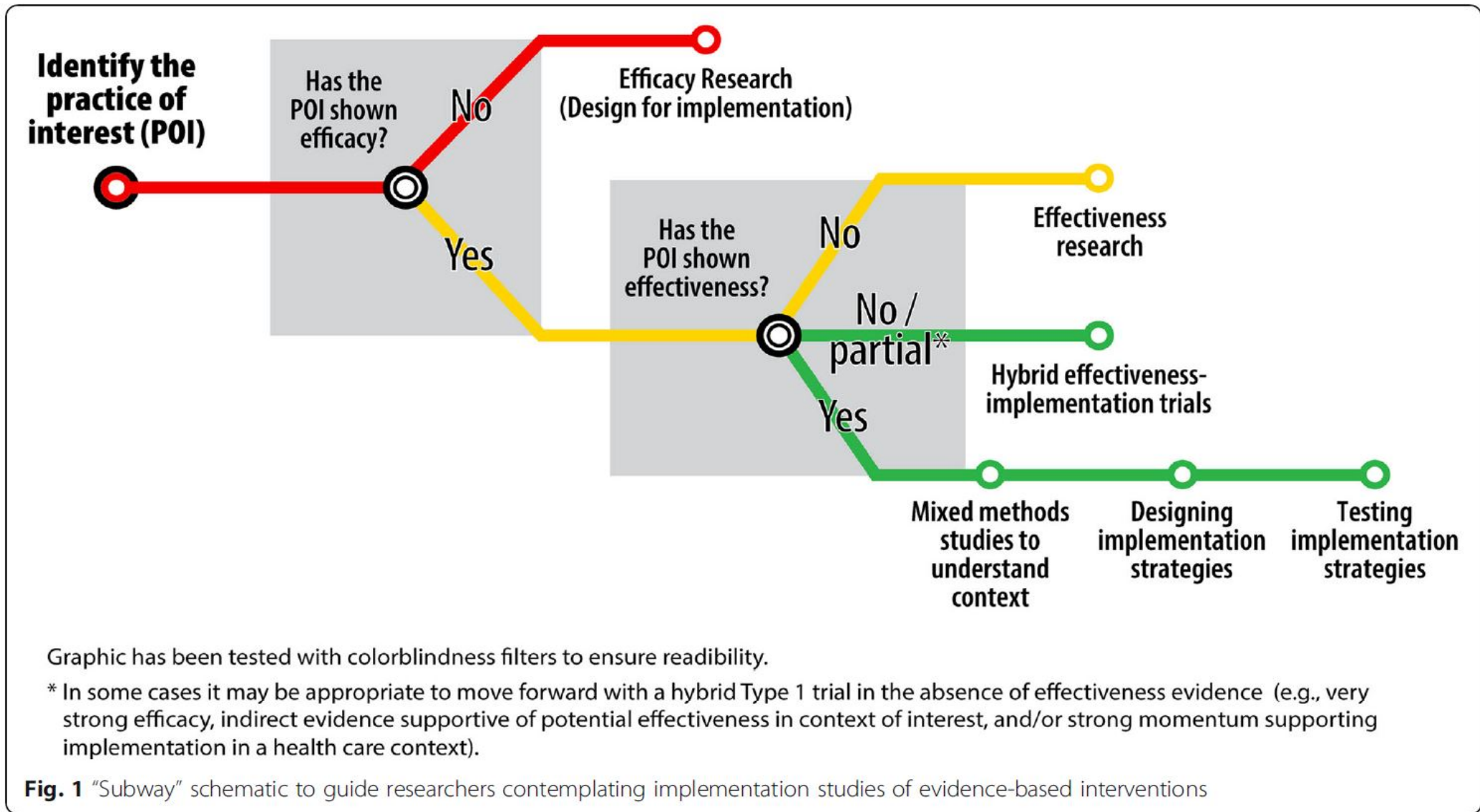
May 21st, 2019 – WIP

Meghan Lane-Fall (Penn) presents about selecting an IS framework for your research question

May 29th, 2019 – ISI

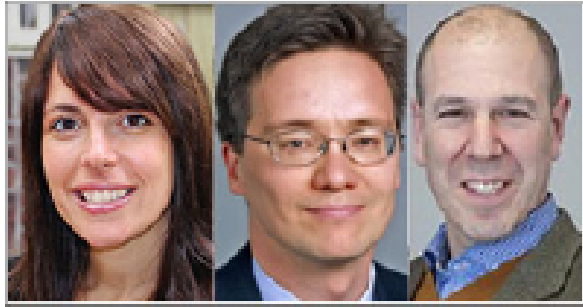
External speaker Wynne Norton (ISI) presents on implementation science (over 40 RSVPed in addition to 50 ISI attendees).

A Major Product of 2019



Scoping implementation science for the beginner: locating yourself on the "subway line" of translational research, *BMC Medical Research Methodology*, June 2019, Lane-Fall, Curran, & Beidas

Featured Projects



APPLYING BEHAVIORAL INSIGHTS TO MENTAL HEALTH CARE

Led by Drs. [Rinad Beidas](#), [David Mandell](#), and [Kevin Volpp](#), the goal of [ALACRITY](#) (Advanced Laboratories for Accelerating the Reach and Impact of Treatments for Youth and Adults with Mental Illness) is to apply insights from behavioral economics and participatory design to advance the science and practice of implementing evidence-based practice for individuals with psychiatric disorders across the lifespan. It includes three exploratory projects and a methods core and represents a collaboration between the [Center for Mental Health Policy and Services Research](#) and the [Center for Health Incentives and Behavioral Economics](#).



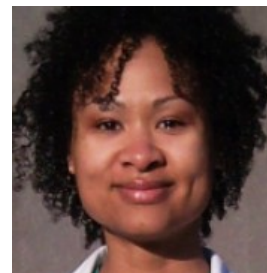
IMPROVING ASTHMA CARE FOR KIDS

An interdisciplinary team at CHOP and Penn led by [Dr. Tyra Bryant-Stephens](#) is studying the effectiveness and implementation of patient-centered interventions [designed to increase asthma control](#) in pediatric populations across West Philadelphia.



DE-IMPLEMENTING AN OVERUSED PRACTICE

A team led by Dr. Christopher Bonafide is studying how to de-implement an overused practice. Their goal is to **E**liminate **M**onitor **O**veruse ([EMO: SpO2](#)) in hospitalized infants who are successfully recovering from the common viral lung disease bronchiolitis.



IMPROVING PATIENT HANDOFFS

Led by Dr. Meghan Lane-Fall, the Handoffs and Transition in Critical Care ([HATRICC](#)) project, seeks to use implementation science to improve handoffs of patients from the Operating Room (OR) to the Intensive Care Unit (ICU) at Penn Presbyterian and at the Hospital of the University of Pennsylvania.

Featured Publications

A Repeated Cross-Sectional Study of Clinicians' Use of Psychotherapy Techniques During 5 Years of a System-Wide Effort to Implement Evidence-Based Practices in Philadelphia, *Implementation Science*, June 2019, Beidas et al.

Scoping Implementation Science for the Beginner: Locating Yourself on the "Subway Line" of Translational Research, *BMC Med Res Methodol.*, June 2019, Lane-Fall, Curran, & Beidas.

Building Systems to Address Tobacco Use in Oncology: Early Benefits and Opportunities From the Cancer Center Cessation Initiative, *Journal of the National Comprehensive Cancer Network*, June 2019, Jenssen et al.

Measuring Overuse of Continuous Pulse Oximetry in Bronchiolitis and Developing Strategies for Large-Scale Deimplementation: Study Protocol for a Feasibility Trial, *Pilot and Feasibility Studies*, May 2019, Rasooly et al.

Creating a Community Based Comprehensive Intervention to Improve Asthma Control in a Low-Income, Low-Resourced Community, *Journal of Asthma*, May 2019, Bryant-Stephens et al.

Barriers and Facilitators of PrEP Adherence for Young Men and Transgender Women of Color, *AIDS and Behavior*, April 2019, Wood et al.

Screening for Housing Instability: Providers' Reflections on Addressing a Social Determinant of Health, *Journal of General Internal Medicine*, April 2019, True et al.

Transforming Mental Health Delivery Through Behavioral Economics and Implementation Science: Protocol for Three Exploratory Projects, *JMIR Research Protocols*, February 2019, Beidas et al.

What's Coming Next



NEW Course Announcement: HPR 612-920 Advanced Topics in Implementation Science in Health

Offered Thursdays, 1PM-4PM

Summer 2: July 2 through August 7

This seminar course offers an opportunity for students to advance their understanding of the thorniest methodological challenges in implementation science. Broadly, topics include study design, study execution, and tensions in the field. The intention will be for attendees to directly apply their learnings to their ongoing or proposed implementation research. This half credit course is intended for those who have already been exposed to the foundational content of implementation science. This can be achieved via HPR 611, the Penn Implementation Science Institute, or other training opportunities such as the NIH TIDIRH/TIDIRC or mentored K awards. Instructor permission is required for enrollment.



Connect with Us

Web: <https://ldi.upenn.edu/implementation-science>

Twitter: https://twitter.com/PISCE_LDI

Join Us: <https://forms.gle/KrfCGdPUqdDdevi49>