

# 2022 FALL KICKOFF

---

Wednesday, September 21, 2022  
4:00–6:30 p.m.

## PROGRAM

**4:00 p.m. | Welcome**

Rachel M. Werner, MD, PhD, *Executive Director, Penn LDI*

**4:05 p.m. | Ground Rules**

David Grande, MD, MPA, *Director of Policy, Penn LDI*

Ingrid Nembhard, PhD, MS, *Fishman Family President's  
Distinguished Professor, The Wharton School*

**4:10 p.m. | New Senior Fellow Presentations**

**5:15 p.m. | Wrap-up**

**5:20 p.m. | Reception**

**6:30 p.m. | End**



@PennLDI



## Nancy Aitcheson

Assistant Professor, Perelman School of Medicine

Nancy Aitcheson, MD, MSHP is an Assistant Professor of Clinical Medicine at the Perelman School of Medicine and an Infectious Diseases physician, with a focus in HIV. She is based at the Hospital of the University of Pennsylvania (HUP). Outside of her clinical commitments, she is involved in work to address the HIV epidemic in Philadelphia and is funded by Ending the HIV Epidemic grant from the City of Philadelphia. This work involves increasing routine HIV screening in emergency departments across the city, improving systems for linkage to care, and innovating strategies to re-engage patients in care. She recently received a grant from Penn LDI and the Philadelphia Department of Health to study HIV testing in emergency departments across the city. She received her medical degree from the Perelman School of Medicine, and completed her internal medicine residency, with a focus in Global Health and Primary Care, at Penn. She stayed at Penn for her fellowship in Infectious Diseases and post-doctoral research. She also holds an MS in Health Policy, with an additional fellowship in the Center for Healthcare Improvement and Patient Safety.

---



## Dolores Albarracín

Professor, Annenberg School for Communication, Penn Nursing, and School of Arts and Sciences

Dolores Albarracín, PhD is a Penn Integrates Knowledge University Professor, and a renowned scholar in the fields of attitudes, communication, and behavior. She has published close to 200 journal articles and book chapters in leading scientific outlets, including the leading outlets of psychology, health, and science, and has had an important impact on national health communication policy. Her research is an unusual combination of basic and applied psychology. Albarracín was the 2018 inaugural recipient of the Award for Outstanding Scientific Contributions to Research on Attitudes and Social Influence and the 2020 Diener Award to Outstanding Mid-Career Contributions in Social Psychology from the Society for Personality and Social Psychology. She has been elected President of the Society for Personality and Social Psychology and is a fellow of the Society for Experimental Social Psychology, Society for Personality and Social Psychology, American Psychological Association, Association for Psychological Science, and Society for Health Psychology. She received her PhD in Psychology from the University of Illinois at Urbana-Champaign, and was previously a tenured professor there and at the University of Florida.

---



## Kimberly Arnold

Assistant Professor, Perelman School of Medicine

Kimberly Arnold, PhD, MPH is a health equity activist-scholar who addresses health disparities disproportionately experienced by Black people through a combination of grassroots and evidence-based interventions in community settings, holistic health services, and policy solutions. She also engages in multi-sector collaboration to address inequities in social determinants of health in the areas of housing, education, food security, and access to high quality mental health services. Dr. Arnold has expertise in health equity, community engaged research approaches, implementation science, and qualitative and mixed methods research. Overall, she conducts research—in partnership with community members, practitioners, and policymakers—that is focused on increasing the adoption, implementation, and sustainability of evidence-based health and mental health interventions in predominantly Black community settings. She earned an MPH from the Drexel University Dornsife School of Public Health and Human Rights, a PhD in Health Policy and Management, and a certificate in Community-Based Public Health from the Johns Hopkins Bloomberg School of Public Health.

---



### **Shoshana Aronowitz** *(Presenting)*

Assistant Professor, Penn Nursing

Shoshana Aronowitz, PhD, MSHP is a family nurse practitioner, community-engaged health services researcher, and Assistant Professor in the Department of Family and Community Health at Penn Nursing. Her research examines innovative delivery models to promote equitable access to substance use treatment and harm reduction services, as well as racial disparities in pain management in the context of the opioid overdose crisis. She provides substance use disorder treatment at Prevention Point Philadelphia and Ophelia Health. In addition, she is a member of SOL Collective, a grassroots harm reduction organization located in Philadelphia. Dr. Aronowitz holds a PhD in Nursing from Penn Nursing, and earned her Master's in Nursing from the University of Vermont, and Master's in Health Policy from the University of Pennsylvania. She completed her postdoctoral fellowship at the National Clinician Scholars Program University of Pennsylvania site.

---



### **Gary Bass**

Assistant Professor, Perelman School of Medicine

Gary Alan Bass, MD, PhD is an Assistant Professor of Surgery in the Division of Traumatology, Surgical Critical Care and Emergency Surgery. He hopes to leverage his clinical and academic interests in trauma, emergency general surgery, surgical critical care, and the intersection of implementation science and surgical outcomes research to better data-driven clinician decision support and patient outcomes. He is an Advanced Trauma Life Support and an Instructor in the Modular Ultrasound for Surgeons Course. He has served on the Emergency Surgery and Visceral Trauma Committees of the European Society for Trauma and Emergency Surgery, the Multi Institutional Trials Committee of the American Association for the Surgery of Trauma, and the Manuscript and Literature Review Committee of the Eastern Association for the Surgery of Trauma. He completed medical school and the general surgery residency programme at the Royal College of Surgeons, and is European board-certified in General & Emergency Surgery. He holds a PhD in Surgical Sciences from Orebro University in Sweden.

---



### **Emily Becker-Haimes** *(Presenting)*

Assistant Professor, Perelman School of Medicine

Emily Becker-Haimes, PhD is an Assistant Professor at the Perelman School of Medicine and the Clinical Director of the Pediatric Anxiety Treatment Center at Hall Mercer program. She is a clinical psychologist and implementation scientist dedicated to improving mental health care for youth. Her research focuses on treatment optimization for pediatric anxiety and implementation of evidence-based treatments into community settings. She is the author of the Resource for Exposures for Anxiety Disordered Youth (READY) Toolkit, as well as over 50 peer-reviewed publications. Her work is funded by organizations such as the National Institutes of Mental Health and the International OCD Foundation. She earned her PhD in Child Clinical Psychology from the University of Miami. She completed her predoctoral internship at the Children's Hospital of Philadelphia and her postdoctoral fellowship at the University of Pennsylvania. She is a licensed psychologist in the state of Pennsylvania.

---



## Amanda Bettencourt

Assistant Professor, Penn Nursing

Amanda Bettencourt, PhD is a pediatric clinical nurse specialist with a primary research focus of implementation science. Her research explores the factors influencing the research-to-practice gap in acute and critical care settings, and tests implementation strategies targeting the interprofessional team to improve the uptake of evidence-based care. She has published extensively on burn clinical care, implementation science, and pediatrics. She is the President-elect of the American Association of Critical Care Nurses (AACN) and serves on the American Burn Association's Research and Burn Center Verification Committees. She completed a National Institute of Nursing Research (NINR) T32 training fellowship in outcomes research in the Center for Health Outcomes and Policy Research at Penn with Dr. Linda H. Aiken. She also completed a K12 postdoctoral fellowship funded by the National Heart Lung and Blood Institute (NHLBI) focused on critical care implementation science with Dr. Anne Sales. She currently leads a multi-site implementation research study on the use of telemedicine for acute burn care funded by the Department of Defense. She earned a PhD from Penn and an MS in Health Care Research from the University of Michigan.

---

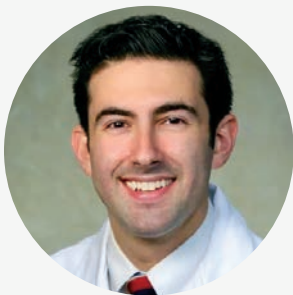


## Patrick Brennan (Presenting)

Professor, Perelman School of Medicine

Patrick Brennan, MD is Chief Medical Officer and Senior Vice President of the University of Pennsylvania Health System. He is also Professor of Medicine at the Perelman School of Medicine and the Hospital of the University of Pennsylvania. As Chief Medical Officer, he leads implementation of Penn's Blueprint for Quality, a strategic effort to improve clinical accountability and the outcomes of care. He chairs the Penn Medicine Internal COVID Advisory Committee and serves as a medical advisor to the Recovery Planning Group of the University of Pennsylvania. He has chaired the Healthcare Infection Control Practices Advisory Committee, which advises the Secretary of the U.S. Department of Health and Human Services and the Centers for Disease Control and Prevention on a broad range of issues related to control of infectious diseases. In April 2021, he was appointed to the inaugural Board of Health for the Delaware County Health Department. Dr. Brennan earned his medical degree at Temple University.

---

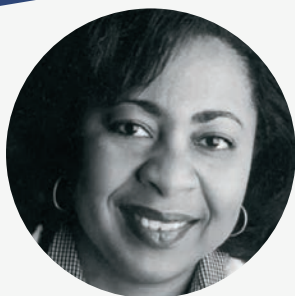


## Robert Brody

Assistant Professor, Perelman School of Medicine

Robert Brody, MD is an Assistant Professor in the Department of Otorhinolaryngology-Head and Neck Surgery. He has clinical appointments at both Penn and at the Corporal Michael J. Crescenz VA Medical Center. He has clinical expertise in the oncologic treatment of mucosal malignancies of the upper aerodigestive tract as well as cutaneous and salivary malignancies of the head and neck. His research primarily focuses on clinical outcomes research utilizing institutional data to better understand the risk factors for poor oncologic outcomes, poor functional outcomes, and poor quality of life outcomes after treatment for head and neck cancer. He further explores these questions by analyzing and curating data from nationwide oncology outcomes databases and cancer registries. He earned a Master's of Science in Clinical Epidemiology at the University of Pennsylvania, where he also completed his residency, followed by fellowship training in Head and Neck Oncology and Microvascular Reconstructive Surgery at the Medical University of South Carolina.

---



## **Tyra Bryant-Stephens**

Associate Professor, Perelman School of Medicine

Tyra Bryant-Stephens, MD is a board-certified pediatrician. She is nationally recognized for her work in community-driven, evidence-based research in asthma and environmental asthma triggers. In 1997, she founded the Community Asthma Prevention Program at CHOP, an asthma program that utilizes community health workers and residents to implement asthma interventions in underserved, poorly-resourced, inner-city communities. She has led many studies and projects to help improve parents' management of children's asthma symptoms using community participatory research methodology funded by the CDC, NIH, and the U.S. Environmental Protection Agency (EPA), among others. She is a founding member of the Pennsylvania Asthma Partnership and past member of the U.S. EPA Children's Health Protection Advisory Committee. She has served on local and national advisory boards and currently serves on the Board of Health for Philadelphia. She recently became the inaugural Senior Director for CHOP's Center for Health Equity.

---



## **Tamara Cadet (Presenting)**

Associate Professor, School of Social Policy and Practice

Tamara Cadet, PhD, MPH is a public health social work researcher who advances health equity by conducting conceptually grounded research to promote health interventions and translate research to practice. Her work focuses on health disparities of older people, particularly around cancer screening and cancer care. Her work is at the intersection of health and social work, spanning the areas of evidence-based health promotion interventions, facilitators and barriers to reducing disparities in preventative health behaviors, and health care service utilization among vulnerable populations. Dr. Cadet's work has a continuing focus on issues of health among the under-resourced, underserved, and underrepresented, which has earned her a place as a leading scholar in the arena of social work and public health. She is currently funded by the National Institute on Aging to modify and evaluate a colorectal cancer screening decision aid for older adults at risk for low health literacy. She completed doctoral training at Simmons College School of Social Work, and holds an MSW and MPH from Boston University.

---



## **Alonso Carrasco-Labra (Presenting)**

Associate Professor, Penn Dental Medicine

Alonso Carrasco-Labra, DDS, PhD is an Associate Professor in the Department of Preventive and Restorative Sciences and the Center for Integrative Global Oral Health. Previously, as senior director, he led the Department of Evidence Synthesis & Translation Research at the American Dental Association Science and Research Institute. He has served as the clinical practice guideline and policy methodologist for the Pan-American Health Organization/World Health Organization, the World Bank, the U.S. Food and Drug Administration, the American Gastroenterological Association, as well as for the governments and health care agencies in Saudi Arabia, Spain, the United Kingdom, Canada, Colombia, the Dominican Republic, Peru, and Chile. He has authored and co-authored more than 100 articles published in peer-reviewed journals in medicine and dentistry, and 10 books and handbooks for practicing evidence-based medicine and research. He received his DDS from the Faculty of Dentistry at the University of Chile. He completed his Master's in Clinical Epidemiology and a PhD in Health Research Methodology at McMaster University.

---





## Yong Chen

Associate Professor, Perelman School of Medicine

Yong Chen, PhD is an Associate Professor of Biostatistics at the Perelman School of Medicine. He directs a Computing, Inference, and Learning Lab at Penn, which focuses on integrating fundamental principles and wisdoms of statistics into quantitative methods for tackling key challenges in modern biomedical data. Dr. Chen is an expert in synthesis of evidence from multiple data sources, including systematic review and meta-analysis, distributed algorithms, and data integration, with applications to comparative effectiveness studies, health policy, and precision medicine. He is also working on developing methods to deal with suboptimal data quality issues in health system data, dynamic risk prediction, pharmacovigilance, and personalized health management. He has over 150 publications in a wide spectrum of methodological and clinical areas. He holds a PhD in Biostatistics from the Bloomberg School of Public Health at Johns Hopkins University.

---



## Rebecca Clark *(Presenting)*

Assistant Professor, Penn Nursing

Rebecca R. S. Clark, PhD, RN is a nurse, midwife, and health services researcher whose long-term career goal is to transform inpatient maternity care in the United States. She believes that system-level change is crucial to improving birth equity and outcomes in the U.S., and is interested in developing and implementing systemic interventions to improve birth outcomes by addressing the quality, safety, and equity of inpatient maternity care. She is interested in strengths-based interventions that do not have a high buy-in, as well as the influence of system-level interventions on clinicians and the clinician-patient relationship. Her work focuses on hospital nursing resources and improvement in inpatient maternity care and outcomes. Improving the quality of inpatient maternity care for opioid-dependent women remains an area of abiding concern for her. She completed her PhD at Johns Hopkins University as a Robert Wood Johnson Future of Nursing Scholar and her postdoctoral fellowship at Penn Nursing's Center for Health Outcomes and Policy Research.

---



## Peggy Compton

Professor, Penn Nursing

Peggy Compton, RN, PhD is a Professor and the van Ameringen Endowed Chair in the Department of Family and Community Health at Penn Nursing. She is a Fellow of the American Academy of Nursing and a member of the International Association in the Study of Pain and the College on Problems of Drug Dependence. Her area of clinical expertise is the intersection of opioids, addiction, and pain, and her novel data has significantly contributed to literature on the phenomenon of opioid-induced hyperalgesia, and has informed guidelines for pain management in people on medication-assisted therapy. Her work establishing methods to identify substance use disorders in chronic pain patients on opioid analgesic therapy complements her expertise in the pain responses of people with opioid use disorders. She is principal investigator on an NIH study evaluating the effects of opioid taper on post-operative pain outcomes, and was recently inducted into the Nurse Researcher Hall of Fame by Sigma Theta Tau International in recognition for the impact of her work. She holds a PhD from New York University.

---



### **Danielle Cullen** *(Presenting)*

Assistant Professor, Perelman School of Medicine

Danielle Cullen, MD, MPH is a faculty member at PolicyLab, Assistant Professor of Pediatrics and Pediatric Emergency Medicine at CHOP and the Perelman School of Medicine, and co-course director for Master level Introduction to Implementation Science. Her research focuses on the intersection between the health care setting and the community, developing and studying interventions to reduce socio-economic health disparities. Her long-term goal is to improve health equity among socially disadvantaged children through the development of effective, acceptable, and feasible strategies to identify social risk and improve family engagement with resources. She serves on multiple regional and national committees, including as co-Chair of the Food Insecurity workgroup for the multi-institutional COACH (Collaborative Opportunities to Advance Community Health) initiative. She earned her MPH in Maternal and Child Health at the Johns Hopkins Bloomberg School of Public Health, and her medical degree from Jefferson Medical College. She completed residency in General Pediatrics at the Children's Hospital of Pittsburgh of UPMC, and Pediatric Emergency Medicine fellowship at CHOP while also serving as a T32 research scholar, earning her Master of Health Policy Research from Penn.

---



### **Xavier Diao**

Assistant Professor, Perelman School of Medicine

Xavier Diao, MD is an Attending Psychiatrist and Assistant Professor of Clinical Psychiatry at the Perelman School of Medicine. His academic and clinical interests include LGBTQ mental health disparities, teaching along the undergraduate-graduate medical education continuum, psychodynamic psychotherapy, and the psychiatric care of transitional age youth and young adults. He is the recipient of the Journal of Gay and Lesbian Mental Health Outstanding Resident Paper Award, the Lois T. Flaherty, MD Best Resident Paper in Adolescent Psychiatry Award, and a NIDDK T35 Short-Term Institutional Research Training Grant to investigate the association between metabolic indices and prodromal psychosis in adolescent patients. He is a former volunteer counselor at the Trevor Lifeline, the only nationwide crisis intervention and suicide prevention helpline for LGBTQ youth. Dr. Diao received his medical degree from the University of Maryland School of Medicine and finished his residency training at the Icahn School of Medicine at Mount Sinai, with further training in child and adolescent psychiatry at the New York-Presbyterian Hospital. He also completed a psychoanalytic fellowship at the New York Psychoanalytic Society & Institute.

---



### **Meredith Doherty** *(Presenting)*

Assistant Professor, School of Social Policy and Practice

Meredith Doherty, PhD, LCSW conducts mixed-method, community-engaged research to understand the relationship between economic security and health. She examines the process through which medical financial hardship accelerates existing racial and ethnic health disparities. Dr. Doherty draws upon her clinical experience as a palliative care social worker in safety-net community hospitals to develop, implement, and evaluate health care-based social needs interventions that target downstream social determinants of health in medically underserved populations. As an implementation scientist, she seeks to advance evidence-based strategies that promote health care access and reduce cancer health disparities. Dr. Doherty is lead investigator of the Guaranteed Income and Financial Treatment Trial, the first randomized control trial of guaranteed income in the U.S. to focus on alleviating financial hardship in families facing cancer.

---



## Caoimhe Duffy

Assistant Professor, Perelman School of Medicine

Caoimhe Duffy, MD, MSc is Assistant Professor of Anesthesiology and Critical Care at the Perelman School of Medicine. Her research focus area is on human factors engineering and safety science in the perioperative arena. She has developed expertise in these areas in Ireland, where she completed a Master's of Science in Human Factors in Patient Safety. Dr. Duffy has engaged in research projects aimed at improving relationships and communication between members of the perioperative care team, including physicians, nurses, surgical technicians, and other support staff. Dr. Duffy received her medical degree from the Royal College of Surgeons in Ireland. She completed her anesthesia residency training with the College of Anaesthesiologist of Ireland. During clinical training, she completed an airway and health care simulation fellowships with the College of Anaesthesiologist in Ireland. Dr. Duffy joined the University of Pennsylvania as a Perioperative Safety Fellow in 2020. She has earned a yellow belt in Six Sigma process improvement and is a Certified Professional in Patient Safety with the Institute of Healthcare Improvement.

---



## Emma Edmondson

Assistant Professor, Perelman School of Medicine

Emma Edmondson, MD, MSHP is an Assistant Professor of Pediatrics, a primary care pediatrician at the CHOP, and a Clinical Diabetes Fellow at the Hospital of the University of Pennsylvania (HUP). She is a faculty member in the Division of General Pediatrics, PolicyLab, and the Center for Pediatric Clinical Effectiveness at CHOP. Her research centers on the prevention and management of nutrition-related chronic diseases across the lifespan. Areas of focus include improving the transition from pediatric to adult care for young adults with youth-onset obesity, type 2 diabetes, and other cardio-metabolic diseases, and food policy reform. She received her medical degree from Columbia University College of Physicians and Surgeons before completing her residency in Internal Medicine-Pediatrics at HUP and CHOP. She completed an Academic General Pediatrics Fellowship at CHOP, the Measey Medical Education Fellowship at HUP, and earned a Master's of Science in Health Policy Research at Penn.

---



## Nwadiogo Ejiogu

Assistant Professor, Perelman School of Medicine

Nwadiogo Ejiogu, MD, MA is a physician-activist committed to supporting intersectional organizing efforts for health justice. Throughout her education and training, she has had the privilege of working collaboratively within social movements for Black queer and trans liberation, prison abolition, disability justice, reproductive justice, and health equity. Her scholarly work uses critical self-reflection and personal narrative to identify ways medical providers and institutions have cared for and harmed patients from marginalized communities. Dr. Ejiogu holds an MD from Meharry Medical College, and an MA in Sociology and Equity Studies in Education and the Collaborative Program in Women and Gender Studies from the University Of Toronto. She completed her residency training in anesthesiology at Northwestern University in Chicago, Illinois and a fellowship in obstetric anesthesiology at Mount Sinai West in New York City.

---





### **Lola Fayanju** *(Presenting)*

Associate Professor, Perelman School of Medicine

Oluwadamilola (Lola) Fayanju, MD, MA is the inaugural Helen O. Dickens Presidential Associate Professor at the Perelman School of Medicine. She is Chief of Breast Surgery for the University of Pennsylvania Health System, Surgical Director of the Rena Rowan Breast Center in the Abramson Cancer Center, and an Innovation Faculty member at the Penn Center for Cancer Care Innovation. She is an academic breast surgical oncologist whose research focuses on health disparities, aggressive breast cancer variants, and improving value in oncology, particularly through the collection and application of patient-reported outcomes. In 2019, she was recognized by the National Academy of Medicine as an Emerging Leader in Health and Medicine Scholar. She received her MD and a Master's in Population Health Sciences from Washington University in St. Louis, where she also completed her residency in General Surgery. She completed fellowship training in Breast Surgical Oncology at The University of Texas MD Anderson Cancer Center. She also holds an MA in Comparative Literature from Harvard.

---



### **Meghan Galligan**

Assistant Professor, Perelman School of Medicine

Meghan Galligan, MD, MSHP is an Assistant Professor of Pediatrics at the Perelman School of Medicine and an attending hospitalist in the Division of General Pediatrics at CHOP. Her scholarly focus is in the organizational science of health care delivery. Dr. Galligan's current work is focused on preventing adverse patient safety outcomes through early recognition of clinical deterioration. She completed her fellowship in Pediatric Hospital Medicine and her residency training in General Pediatrics at CHOP. She completed her Master's in Health Policy Research at the University of Pennsylvania. She completed training in improvement science and patient safety as a fellow in the Center for Healthcare Improvement and Patient Safety (CHIPS). Dr. Galligan received her medical degree from the Stanford University School of Medicine.

---

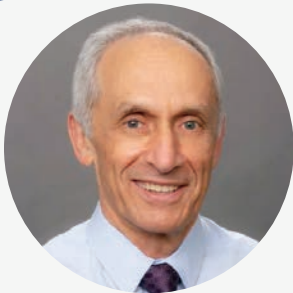


### **Cerrene Giordano**

Assistant Professor, Perelman School of Medicine

Cerrene Giordano, MD is an Assistant Professor of Dermatology at the Perelman School of Medicine, and a dermatologic surgeon specializing in Mohs micrographic surgery. Her clinical and research interests surround patient satisfaction and post-operative pain management in dermatologic surgery. More specifically, her research focuses on the current opioid epidemic and how to understand and reduce overuse in the dermatologic surgery field. Her additional interest surrounds patients with inherited skin cancer syndromes, such as Gorlin and Muir Torre, and she is working to develop a multidisciplinary team at Penn for the special care of this patient population. She is also directing much of her research attention to improving the care of these populations through both surgical and non-surgical management. She completed her medical school training at the University of Buffalo School of Medicine and Biomedical Sciences, and her dermatology residency at Henry Ford Hospital in Detroit, MI, where she served as Chief resident. She completed her Micrographic Surgery and Dermatologic Oncology fellowship at Memorial Sloan Kettering Cancer Center.

---



## Michael Glick

Professor, Penn Dental Medicine

Michael Glick, DMD is the Executive Director of the Center for Integrative Global Oral Health and a Professor at Pennsy Dental Medicine. Dr. Glick has authored more than 300 publications, including original research articles, editorials, and book chapters, and has written, edited, and co-edited 10 textbooks. Among these is the seminal text in oral medicine – Burket's Oral Medicine. Dr. Glick is the immediate past Dean of the School of Dental Medicine at the University at Buffalo, past-President of the American Board of Oral Medicine, and has served as Editor-in-Chief of the Journal of the American Dental Association from 2005 to 2020. He was chair of FDI/World Dental Federation's Vision 2020 and co-chair of its Vision 2030. He earned his DMD from Hebrew University Hadassah School of Dental Medicine, Jerusalem, Israel.

---



## Ali Hamedani

Assistant Professor, Perelman School of Medicine

Ali Hamedani, MD, MHS is an Assistant Professor of Neurology at the University of Pennsylvania. His research is focused around the role of visual dysfunction in Parkinson's disease and other neurodegenerative disease outcomes (especially hallucinations and other neurocognitive sequelae) using national health surveys and administrative claims data. He has also examined the prevalence and health care utilization patterns associated with visual impairment in the older adult population. He obtained his MD at the University of Maryland School of Medicine. He also holds a Master's degree in Epidemiology from the Johns Hopkins Bloomberg School of Public Health. After completing his neurology residency at Penn, Dr. Hamedani obtained fellowship training in both neuro-ophthalmology and movement disorders.

---



## Rebecca Arden Harris

Assistant Professor, Perelman School of Medicine

Rebecca Arden Harris, MD, MSc is an Assistant Professor and Primary Care Physician in the Department of Family Medicine and Community Health. Before medical school, Dr. Harris was a research assistant in labs at the Fox Chase Cancer Center and at Penn, where she investigated the immune response to hepatitis B and C viruses. At Jefferson and Montefiore, she studied antiretroviral medication adherence among HIV-positive persons who were experiencing homelessness. She also constructed and validated an instrument for predicting treatment interruptions of HIV medication. Her recent research has focused on opioid prescribing in primary care. On the treatment side, Dr. Harris is interested in the design and evaluation of treatment interventions for opioid use disorder. A graduate of Haverford College, she attended medical school at Thomas Jefferson University and completed her residency at Montefiore Medical Center in New York.

---



### **Amy Hillier** *(Presenting)*

Associate Professor, School of Social Policy and Practice

Amy Hillier, PhD, MSW is a social worker and Associate Professor in the School of Social Policy and Practice (SP2). Her research has focused on historical housing and public health disparities including mortgage redlining, affordable housing, healthy foods, park use and access, and outdoor advertising. She led the required two-course sequence on American racism within SP2's social work program and has taught courses in city planning, urban studies, public health, and social policy focused on equity and social justice. She is the founding director of the cross-school graduate LGBTQ certificate and, with Dr. Beverley Crawford, co-created the online course, "The Penn Experience: Racism, Reconciliation and Engagement." Her most recent research focuses on transgender youth and their families. With colleagues, she is working to develop a short screener for parents to complete in health care settings to identify young children who are gender non-conforming in order to normalize a wide range of gender expressions and identify families who might need support. She holds an MSW and PhD from Penn.

---



### **Sharon Irving** *(Presenting)*

Associate Professor, Penn Nursing

Sharon Irving, PhD is an Associate Professor on the Clinician Educator Track and serves as Vice-Chair in the Department of Family and Community Health at Penn Nursing. She is nationally and internationally recognized for her work in nutrition assessment, delivery, and monitoring in critically ill infants and children. She maintains clinical practice as a pediatric Nurse Practitioner at CHOP. She credits clinical experience as the driving force for her program of research that is focused on nutrition assessment, determination of energy and protein requirements, monitoring nutrient delivery, and determining feeding tolerance in this population. Dr. Irving works collaboratively across disciplines to heighten recognition of the importance of nutrition therapy on patient outcomes. She has co-authored several articles that bring new knowledge, synthesizes existing knowledge, and presents guidelines and best practices in the field of nutrition therapy in critically ill children. She has served as principal investigator, co-investigator, and site principal investigator on studies related to nutrition therapy in the pediatric ICU population. She earned her PhD and MSN from Penn.

---



### **Shari Jager-Hyman**

Assistant Professor, Perelman School of Medicine

Shari Jager-Hyman, PhD is a licensed clinical psychologist and an Assistant Professor in the Department of Psychiatry. Dr. Jager-Hyman studies the development and implementation of evidence-based practices for suicide prevention, with a particular focus on high-risk groups, including individuals on the autism spectrum. She is currently an MPI on two NIMH R21 projects and a PCORI comparative effectiveness trial, all focused on improving suicide prevention services across health care settings. She is also a Co-Investigator on the NIMH-funded Penn INSPIRE Center and other projects supported by NIMH and the VA. She served as a suicide prevention programmatic consultant for the VA Office of Research Development and has trained clinicians across the country in EBPs for suicide prevention. Dr. Jager-Hyman received her PhD in Clinical Psychology from Temple University. She completed her predoctoral clinical internship at Montefiore Medical Center and the Albert Einstein College of Medicine, and her research postdoctoral fellowship at the Penn Center for the Prevention of Suicide.

---



### Kevin Johnson

Professor, Perelman School of Medicine, School of Engineering and Applied Sciences, Annenberg School for Communication

Kevin Johnson, MD, MS is the David L. Cohen University Professor of Pediatrics, Biomedical Informatics, and Science Communication at the University of Pennsylvania. He is an internationally known developer and evaluator of clinical information technology. His research interests have been related to developing and encouraging the adoption of clinical information systems to improve patient safety and compliance with practice guidelines. He is widely known for his work with e-prescribing and computer-based documentation, as well as his recent creative endeavors to communicate science to lay audiences, including a feature length documentary about health information exchange. He is the author of over 150 publications and has won dozens of awards over his career. Notably, he was elected to the American College of Medical Informatics in 2004, The Academic Pediatric Society in 2010, the National Academy of Medicine (Institute of Medicine) in 2010, the International Association of Health Science Informatics in 2021, and the American Institute for Medical and Biological Engineering in 2022.

---



### Summer Kaplan *(Presenting)*

Assistant Professor, Perelman School of Medicine

Summer Kaplan, MD, MS is an Assistant Professor of Radiology at the Perelman School of Medicine, the Director for Pediatric Emergency Radiology at the Children's Hospital of Philadelphia (CHOP), and is the Director for Point-of-Care Ultrasound at CHOP. Dr. Kaplan's work and research centers on imaging utilization in children, with a focus on radiation safety, clinical decision support, price transparency, and imaging use in the emergency and critical care settings. Dr. Kaplan is an active member of the CHOP Radiology Quality and Safety team, CHOP Clinical Pathways Committee, and the American College of Radiology's Economics Committee. She earned her MD from the University of Pennsylvania, completed her residency in Radiology at Temple University Hospital, and fellowship in Pediatric Radiology at CHOP.

---



### Shimrit Keddem

Assistant Professor, Perelman School of Medicine

Shimrit Keddem, PhD, MPH is an Assistant Professor in the Department of Family Medicine and Community Health, and Co-Director of the Qualitative Research Core at the Veterans Affairs Center for Health Equity Research & Promotion (CHERP). Dr. Keddem is a health services researcher and educator with expertise in qualitative and mixed methods. Through her research, Dr. Keddem seeks to improve health care programming, especially for vulnerable and disadvantaged populations. Her work in health services research has focused on system-level assessments and patient experiences of primary care and patient-centered care both within and outside the Veterans Health Administration. Her research in women's health has focused on the relationship between social-ecological factors and health outcomes for women. Throughout her research career, she has worked in collaboration with colleagues from multiple disciplines. She has used a variety of mixed methods techniques to explore various public health and health services topics. She earned her PhD and MPH from Penn.

---





### **Sameed Khatana (Presenting)**

Assistant Professor, Perelman School of Medicine

Sameed Khatana, MD, MPH is an Assistant Professor of Medicine in the Division of Cardiovascular Medicine at the Perelman School of Medicine and a physician at the Philadelphia Veterans Affairs Medical Center. He has worked as a fellow at the Center for Medicare and Medicaid Innovation on the delivery of diabetes prevention programs for Medicare patients. His research interests include health economics, quantitative evaluation of health policies, quality designation of health providers, and disparities in cardiovascular care. His research has been published in high impact medical journals including *JAMA*, *JAMA Internal Medicine*, and the *Journal of the American College of Cardiology*. He completed his medical school training at the University of Pittsburgh School of Medicine, his internal medicine residency at Brigham and Women's Hospital and Harvard Medical School as part of the Medical Management Leadership Track, and his cardiology fellowship at the University of Pennsylvania. He also holds a Master's of Public Health degree from the Harvard T.H. Chan School of Public Health.

---



### **Austin Kilaru (Presenting)**

Assistant Professor, Perelman School of Medicine

Austin Kilaru, MD, MSHP is an emergency physician and health services researcher. His work focuses on transitions from emergency department care to outpatient services, innovation in delivery and financing of emergency care, tools to address social determinants of health at the bedside, and policy interventions to support treatment for opioid use disorder. His work has been featured in the *New England Journal of Medicine*, *JAMA Network Open*, *Health Affairs*, and *Annals of Emergency Medicine*. Dr. Kilaru received his medical degree from the University of Pennsylvania and trained in emergency medicine at Highland Hospital in Oakland, California, where he served as chief resident. He completed the National Clinical Scholars Program at Penn and received a Master's degree in Health Policy Research.

---



### **Cait Lambertson (Presenting)**

Professor, The Wharton School

Cait Lambertson, MBA, PhD is the Alberto I. Duran Presidential Distinguished Professor of Marketing at The Wharton School. Her research covers a wide span, ranging from studies of the sharing economy, empathy in health care settings, to end-of-life decision-making. New work explores the concepts of marketplace dignity, identifying practical means by which firms can design in ways that affirm and respect individuals' inherent worth. In recognition of her research contributions, Dr. Lambertson was named a Marketing Science Institute Scholar and received the American Marketing Association's Erin Anderson Award, which is given annually to the field's top female scholar and mentor. She serves as an Associate Editor for the *Journal of Marketing* and the *Journal of Consumer Psychology*. Outside her academic role, Dr. Lambertson has been retained in consulting roles by the U.S. Departments of Labor and Education, and has worked in an advisory role in the financial services and pharmaceutical industries. She holds an MBA and a PhD from the University of South Carolina.

---



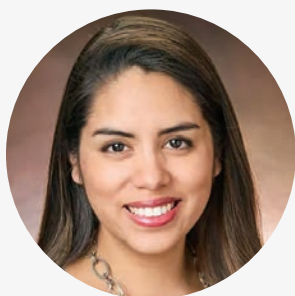


## Neil Malhotra

Associate Professor, Perelman School of Medicine

Neil Malhotra, MD is Chief of Neurosurgery at the Hospital of the University of Pennsylvania, Department Vice Chairman, and is the Fellowship Director for the Frazier Scholar and McKenna Scholar in Statistics Fellowships. Dr. Malhotra directs the EpiLog outcomes lab and co-directs the Restorative Spinal Therapy (ReST) Laboratory / Translational Spine Research Lab (TSRL). He is committed to advancing care for all surgical diseases, with special attention to complex spinal oncologic and degenerative conditions. His teams work with bench models characterizing native tissue structure/function, develop small and large animal models, perform clinical research, and lead prospective clinical trials designed to alleviate patient suffering. He initiated the Equity State Lab in 2015 to study outcome disparities related to social determinants of health. Dr. Malhotra has published over 150 research manuscripts and has mentored more than 30 research fellows, statistical fellows, and research residents. He attended medical school the University of Virginia and completed his residency at Penn.

---



## Diana Montoya-Williams

Assistant Professor, Perelman School of Medicine

Diana Montoya-Williams, MD is an attending neonatologist in the division of Neonatology at CHOP, a clinician scientist in CHOP's PolicyLab and an Assistant Professor of Pediatrics at the Perelman School of Medicine. She conducts research on the drivers of racial and ethnic inequities in infant health outcomes. Her recent work has also explored structural and individual factors that confer resilience to poor birth and infant health outcomes among populations vulnerable to structural and interpersonal discrimination. She has a special interest in immigration policies as political determinants of Latinx perinatal and infant health outcomes. As a member of CHOP PolicyLab's Health Equity team, she also engages in legislative and policy advocacy. Dr. Montoya-Williams received her medical degree from Columbia University's College of Physicians & Surgeons, and completed her residency in Pediatrics and her fellowship in Neonatology at the University of Florida.

---

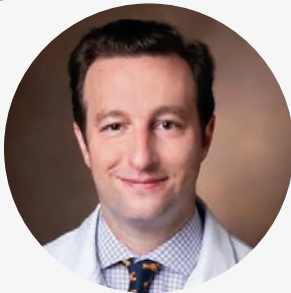


## Ashwin Nathan

Assistant Professor, Perelman School of Medicine

Ashwin Nathan, MD, MS is an Interventional Cardiologist at the Hospital of the University of Pennsylvania and at the Corporal Michael C. Crescenz VA Medical Center. He is also an Assistant Professor in the Perelman School of Medicine, and a member of the Penn Cardiovascular Outcomes, Quality & Evaluative Research Center. His clinical interests include structural heart interventions, including transcatheter aortic valve replacement, transcatheter edge-to-edge repair, transcatheter mitral valve replacement, transcatheter pulmonary valve replacement, and closure of atrial septal defects, among others. He performs outcomes and health policy research related to the emergence and use of novel technologies and pharmacotherapies, with a specific focus on matters of racial, ethnic, and socioeconomic inequities in care. He earned his MD from Harvard Medical School. He completed his residency in Internal Medicine at the Brigham and Women's Hospital and completed fellowships in cardiovascular medicine and interventional cardiology at Penn. He also holds an MS in Health Policy from Penn.

---



## Michael Neuss

Assistant Professor, Perelman School of Medicine

Michael Neuss, MD, PhD is a hospitalist and an Assistant Professor of Clinical Medicine. Dr. Neuss's current research is on the early history (ca. 1960s-70s) of what we now call the electronic health record. His interest in the history of medicine also extends to projects including "COVID-19 and Vanderbilt: A Community Oral History Project," for which he served as PI, as well as extramural commitments, including participation on the editorial committee for the journal CHEST's "Humanities in Chest Medicine" section. Dr. Neuss also has broad interests in medical education and quality improvement. Dr. Neuss completed medical school at Duke University and his residency at Vanderbilt University Medical Center. Prior to medical school, he completed a PhD in History at Columbia University, where a Richard Hofstadter fellowship supported his doctoral studies. Specific areas of interest were the history of science and medicine, as well as early modern European history.

---



## Neil Ray

Assistant Professor, Perelman School of Medicine

Neil Ray, MD is a Clinical Assistant Professor of Emergency Medicine at the Perelman School of Medicine. His background involves health care innovation, design thinking, and medical devices. He has three patents for devices ranging from endoscopy to catheter hubs. He also partnered with the Penn School of Engineering and the Weitzman School of Design to design and manufacture face shields for the pandemic. His interests are in the intersection between engineering design and medicine. He earned his MD from Duke University and completed his residency in Emergency Medicine at the Hospital of the University Of Pennsylvania.

---



## Alex Rees-Jones *(Presenting)*

Associate Professor, The Wharton School

Alex Rees-Jones, PhD is an Associate Professor in the Business Economics and Public Policy Department at Wharton. In addition to his position as a professor, Dr. Rees-Jones is Faculty Research Fellow at the National Bureau of Economic Research. In his research, he explores the ways in which psychological biases and imperfect cognition affect economic policy analysis. A major topic area of interest is public finance, specifically examining how citizens' imperfect response to tax incentives affect the assessment of tax policy. More recent work has examined similar forces affecting market design, specifically examining how market participants' imperfect understanding of assignment procedures affect the outcomes that the markets determine. He received a PhD in Economics from Cornell University, and completed a Postdoctoral Fellowship in Health and Aging at the National Bureau of Economic Research.

---

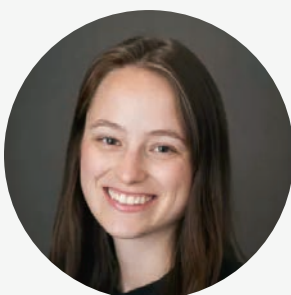


## Vincent Reina

Associate Professor, Weitzman School of Design

Vincent Reina, PhD, MBA is an Associate Professor of Planning and Urban Economics, and is the Faculty Director of the Housing Initiative at Penn. His research focuses on urban economics, low-income housing policy, household mobility, neighborhood change, and community and economic development. This work explores housing as a determinant of health, disparities in access to housing assistance and the implications for health equity, and particularly focuses on the impact of racism and discrimination in housing on health outcomes. Dr. Reina was the Dean's Distinguished Visiting Professor at Penn Nursing, a Visiting Scholar at the Federal Reserve Bank of Philadelphia, a Lincoln Institute for Land Policy Scholar, and the recipient of the Rising Scholar award by the Association of Collegiate Schools of Planning. He earned his PhD in Public Policy and Management from University of Southern California and his MBA from New York University.

---



## Halley Ruppel *(Presenting)*

Assistant Professor, Penn Nursing

Halley Ruppel, PhD, RN is a Research Assistant Professor at Penn Nursing and core faculty in the CHOP Research Institute Center for Pediatric Clinical Effectiveness. Her research focuses on integration of technology into the acute care environment with the goal of optimizing patient safety and clinical outcomes. To date, much of her research has focused on clinical alarm management to reduce alarm burden and eliminate unintended patient safety problems, such as clinician alarm fatigue. Her research is grounded in her background as a pediatric critical care nurse. Her goal is to identify practical and sustainable interventions to ensure technologies are used safely and effectively, and improve care delivery in acute care settings to optimize patient outcomes and clinicians' workflow. She is a Senior Fellow in the Penn Nursing Center for Health Outcomes and Policy Research. She received her MS in Nursing Education from New York University, and her PhD in Nursing from Yale University. She completed a Postdoctoral Fellowship in Informatics at Kaiser Permanente Northern California Division of Research.

---



## Megan Ryerson *(Presenting)*

Associate Professor, Weitzman School of Design,  
School of Engineering and Applied Science

Megan Ryerson, PhD is the UPS Chair of Transportation and an Associate Professor of City and Regional Planning and Electrical and Systems Engineering at Penn. She is a Senior Fellow at the Center for Injury Research and Prevention at CHOP, and the Research Director of the Mobility21 Transportation Research Center, a Department of Transportation (DOT) University Transportation Center. Dr. Ryerson develops new and practical analytical approaches to center injury prevention and equity into transportation planning methods. Her research is supported by the National Science Foundation, the Department of Transportation, and other transportation agencies and research organizations. Dr. Ryerson serves as the Associate Dean for Research at the Weitzman School of Design. She is a committed educator, dedicated to the advancement of women in transportation. She recruits and maintains a majority female research group from across Engineering, Arts and Sciences, and the Weitzman School. She holds a PhD in Civil and Environmental Engineering from the University of California, Berkeley.

---

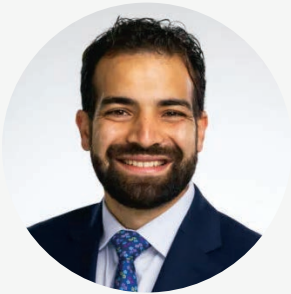


### **Michael Scott** *(Presenting)*

Professor, Perelman School of Medicine

Michael James Scott, MB, ChB is Professor and Division Chief in Critical Care Medicine in the Department of Anesthesiology. He has extensive background in perioperative surgical outcome quality improvement and implementation science, and has worked in five countries all with different health systems. He is recognized as one of the key inventors of Enhanced Recovery after Surgery (ERAS) which has become a new standard of care for all surgical patients. He was National Clinical Advisor in the U.K. National Health System and when he left to move to the U.S. in 2016, the NHS ranked as the top health system for value in the world. He continues his role in implementation of ERAS across the U.S. and is currently President of ERAS USA. He has championed the reduction in opioid use in surgery, and has been involved in webinars for the Office of the White House Office of National Drug Policy. His latest research in quality outcomes is focused on the long-term effects of acute kidney injury and reduction using goal directed hemodynamic algorithms. He earned his MD from Birmingham University Medical School.

---



### **Ramy Sedhom**

Assistant Professor, Perelman School of Medicine

Ramy Sedhom, MD is an Assistant Professor of Clinical Medicine in the Division of Hematology & Oncology at the University of Pennsylvania, and is a Medical Oncologist and Palliative Care Physician at Penn Medicine's Princeton Medical Center. Dr. Sedhom's clinical and research interests are in cancer care delivery. His work has focused on three core areas: (1) integration of supportive care to improve the experience of patients living with cancer and their caregivers (2) the use of behavioral economics to improve routine patient care and (3) the hidden burdens imposed on and faced by people with cancer and their caregivers while receiving this care. He is a graduate of Albany Medical College. He completed his internal medicine training and chief residency at Rutgers Robert Wood Johnson Medical School where he received a Golden Apple Teaching Award. He completed his oncology fellowship at Johns Hopkins, and his palliative care fellowship at Memorial Sloan Kettering.

---



### **Li Shen** *(Presenting)*

Professor, Perelman School of Medicine

Li Shen, PhD is a Professor of Informatics and the Interim Director of the Division of Informatics in the Department of Biostatistics, Epidemiology and Informatics. His research interests include machine learning, medical image computing, biomedical and health informatics, network science, imaging genomics, multi-omics and systems biology, Alzheimer's disease, health disparity, and big data science in biomedicine. The central theme of his lab is focused on developing and applying informatics, computing and data science methods for discovering actionable knowledge from complex biomedical and health data. He is the PI of multiple NIH and NSF grants on developing informatics, computing and data science methods for various biological, medical, and health care applications including brain imaging genomics, genetics, and drug repurposing studies for Alzheimer's disease, mining drug effects from the EHR data, AI and technology for aging care, and big data mining in brain science. He obtained his PhD in Computer Science from Dartmouth College.

---



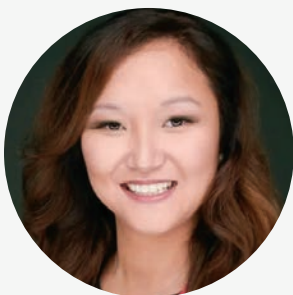


## Julia Szymczak

Assistant Professor, Perelman School of Medicine

Julia Szymczak, PhD is a medical sociologist with expertise in the social and cultural determinants of decision-making and behavior in health care organizations. Through her research, she seeks to achieve two overarching goals: (1) generate knowledge about the social mechanisms that produce safe, high quality, and equitable health care, and (2) apply that knowledge to the design and implementation of interventions that improve patient outcomes, minimize unintended consequences, and are sustainable. She is an internationally recognized expert on the sociobehavioral dynamics that shape antimicrobial use across clinical contexts in human and veterinary medicine and in the application of implementation science frameworks to research in antimicrobial stewardship. She serves as the Associate Director for Social Science Methods in Healthcare Delivery Science in the Center for Pediatric Clinical Effectiveness at CHOP, as an elected member of the Medical Faculty Senate at the Perelman School of Medicine, and as a Senior Scholar in the Center for Clinical Epidemiology and Biostatistics. She holds PhD in Sociology from Penn and completed a Postdoctoral Fellowship in the Division of Infectious Diseases at CHOP.

---



## Krysti Vo

Assistant Professor, Children's Hospital of Philadelphia (CHOP)

Lan Chi (Krysti) Vo, MD is a nationally recognized expert on telehealth and digital health. Her research mission is to develop evidence-based digital health interventions to improve outcomes. Her immediate focus is to develop digital health products for suicide risk screening of children and adolescents in primary care, and to connect those at risk to mental health care. She was previously the John E. Schowalter Resident on Council (Board of Directors) of AACAP. Her experiences in technology include consulting with eClinicalWorks and APA PsychPRO Registry, developing digital health startups, and participating in a fellowship with Mount Sinai Innovation Partners. She currently serves on the AACAP Health Information Technology Committee and the Telepsychiatry Committee, and previously served on APA Committee on Mental Health Technology. She earned her MD from the University of Texas Southwestern Medical Center.

---



## Lauren VonHoltz

Assistant Professor, Perelman School of Medicine

Lauren VonHoltz, MD, MPH is an Assistant Professor in the Emergency Medicine Department at the Perelman School of Medicine and a Pediatric Emergency Medicine Attending at CHOP. Her research interests lie at the intersection of health and digital and social media technologies. She seeks to find innovative ways to identify and serve at-risk youth within digital networks that are an integral part of their daily lives. She also aims to use technology to bridge the divide between patients and their doctors through novel communication methods. Dr. VonHoltz recently spearheaded the creation of a social needs assessment and resource allocation program that operates within the CHOP Emergency Department, entitled "Family Connects." She worked as an Academic Associate in the Emergency Department at North Shore University Hospital. She completed her medical degree and MPH at Penn. She completed a residency in general pediatrics and a fellowship in Pediatric Emergency Medicine at CHOP.

---