

2019 LDI SENIOR FELLOW *fall kickoff*



Erin Aakhus, MD, MSHP
Assistant Professor and Assistant Fellowship Program Director
Division of Hematology-Oncology
Perelman School of Medicine



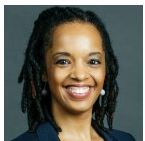
Rebecca Brown MD, MPH
Assistant Professor of Medicine
Division of Geriatrics
Perelman School of Medicine



Molly Candon, PhD
Research Assistant Professor
Center for Mental Health, PSOM
Lecturer, Department of Health Care Management
The Wharton School



Jeremy Cannon MD, SM, FACS
Associate Professor of Surgery
Perelman School of Medicine



Stephanie Creary, PhD
Assistant Professor of Management
The Wharton School



Timothy Gaulton, MD, MSCE
Assistant Professor
Department of Anesthesiology and Critical Care
Perelman School of Medicine



Veena Graff, MD, MS
Assistant Professor
Department of Anesthesiology and Critical Care
Perelman School of Medicine



Joanna Lee Hart, MD, MSHP
Assistant Professor
Pulmonary, Allergy and Critical Care Division
Perelman School of Medicine



Karen Hirschman, PhD, MSW, FGSA
NewCourtland Term Chair, Health Transitions Research
Research Associate Professor
School of Nursing



Krzysztof "Kris" Laudanski, MD, PhD
Assistant Professor
Department of Anesthesiology and Critical Care
Perelman School of Medicine



Terri Lipman PhD, CRNP, FAAN
Assistant Dean, Community Engagement
Miriam Stirl Endowed Term Professor of Nutrition
Professor of Nursing of Children, School of Nursing
Professor of Pediatric Nursing, CHOP



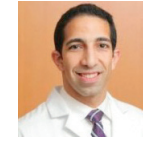
Meredith Matone, DrPH, MHS
Scientific Director, PolicyLab, CHOP
Research Assistant Professor of Pediatrics
Perelman School of Medicine



Stephanie Mayne PhD, MHS
Assistant Professor of Pediatrics
Faculty Member, PolicyLab
Faculty Member, CPCE
CHOP



Ingrid Nembhard PhD, MS
Fishman Family President's Distinguished Associate
Professor of Health Care Management
The Wharton School



Comron Saifi, MD
Assistant Professor of Orthopaedic Surgery
Perelman School of Medicine



Sarah Schrauben MD, MSCE
Instructor of Medicine
Renal – Electrolyte and Hypertension Division
Faculty Fellow, CCEB
Perelman School of Medicine



Paul Stricker, MD
Associate Professor of Anesthesiology and Critical Care
Perelman School of Medicine
Attending Anesthesiologist
CHOP



Benjamin Sun MD, MPP
Professor and Chair
Department of Emergency Medicine
Perelman School of Medicine