

Planning for your Future Health Care Needs

What Matters Most To You



Friday, May 17, 2019

12:00-1:15pm

Houston Hall
Class of '49 Auditorium
3417 Spruce Street

schedule

Planning for your Future Health Care Needs

What Matters Most To You

FRIDAY, MAY 17, 2019

12:00-1:15pm

Houston Hall, Class of '49 Auditorium

3417 Spruce Street

WELCOME

RACHEL WERNER, MD, PhD

Executive Director, Leonard Davis Institute for Health Economics

MODERATOR

NANCY A. HODGSON, RN, PhD, FAAN

Associate Professor, Biobehavioral Health Science, School of Nursing

PANELISTS

NORMA COE, PhD

Associate Professor of Medical Ethics and Health Policy, Perelman School of Medicine

GEORGE DEMIRIS, PhD, FACMI

Penn Integrates Knowledge University Professor, School of Nursing and Perelman School of Medicine

PILAR GONALONS-PONS, PhD

Assistant Professor of Sociology, School of Arts and Sciences

ALLISON K. HOFFMAN, JD

Professor of Law, Law School

MARY NAYLOR, PhD, RN, FAAN

Marian S. Ware Professor; Director, NewCourtland Center for Transitions and Health, School of Nursing

RACHEL WERNER, MD, PhD

Professor of Medicine, Perelman School of Medicine

Professor of Health Care Management, The Wharton School

Executive Director Leonard Davis Institute of Health Economics

about

Planning for your Future Health Care Needs

What Matters Most To You

Rising costs, uneven access and quality of care, too often litter the headlines describing health care in the U.S. This session explores the current system of paying for long-term care, proven models of care and wellness, patient and caregiver-directed partnerships, and technological and organizational innovations as key opportunities to enhance and improve health care delivery. What is critical is to be sure that the changes sought are aligned with your needs, values, and preferences. Attendees will be engaged in an interactive dialogue with a multidisciplinary panel of Penn experts to help move the needle on achieving high value care for an aging society.

NANCY A. HODGSON, RN, PhD, FAAN



Nancy A. Hodgson, RN, PhD, FAAN is Associate Professor in the Department of Biobehavioral Health and Anthony Buividas Term Chair in Gerontology at the University of Pennsylvania School of Nursing. A nationally recognized nurse researcher, Dr. Hodgson's career has been focused on the development, testing, and dissemination of person-centered and family-centered interventions for persons living with dementia. This work has helped to inform care practices for persons living with dementia and their caregivers through the development of palliative care protocols that address the leading symptoms in dementia that cause distress or impair quality of life. As a clinician and educator, Dr. Hodgson seeks out innovative ways to foster academic-community partnership by linking research and practice in order to move evidence-based findings into dementia care practice. She is a Fellow in the American Academy of Nursing and the Gerontological Society of America.

NORMA B. COE, PhD

Norma B. Coe is an Associate Professor of Medical Ethics and Health Policy at the Perelman School of Medicine. Her research interests are in health economics and public finance. Her work strives to identify causal effects of policies that directly and indirectly impact health, human behavior, health care access, and health care utilization. One focus has been measuring the relationship between retirement and health, health care utilization, and health behaviors. Another focus of her research has been long-term care and long-term care insurance, and how they affect the health, work behavior, and health care utilization of current and potential caregivers. In ongoing work, funded by the NIA, Dr. Coe and her colleagues are estimating the direct and indirect costs of Alzheimer's disease and related dementias. Prior to joining Penn, she was an Assistant Professor in Health Services at the University of Washington, and the Associate Director of Research at the Boston College Center for Retirement Research. She received her PhD in Economics from MIT and BA in Economics from the College of William and Mary.



GEORGE DEMIRIS, PhD, FACMI

George Demiris, PhD, FACMI, has been at the forefront of the intersection of informatics and nursing science, and his work has introduced new and innovative approaches to old problems in gerontology.



He is exploring innovative ways to utilize technology and support patients and their families in various settings including home and hospice care. He has conducted numerous federally funded studies and his work has been funded consistently over the years both by the National Institutes of Health (NIH) and the National Science Foundation (NSF). His expertise is also in designing and evaluating “smart home” solutions for aging, and in understanding the potential of wearable devices or digitally augmented residential settings to facilitate passive monitoring and support independence and quality of life for community dwelling older adults. His research provides evidence-based recommendations as to how to design systems that are easily adopted by older adults and integrated in their lives. He has examined the challenges of privacy and obtrusiveness in the context of technology use, and he has provided a comprehensive examination of technical, ethical, and practical challenges associated with the use of technology to support aging.

PILAR GONALONS-PONS, PhD

Pilar Gonalons-Pons is an Assistant Professor in the Department of Sociology at the University of Pennsylvania and a research associate at the Population Studies Center. Her broad areas of interest include gender, family, social stratification, social policy, and cross-national comparative studies. She studies the organization of caregiving, including elder care, and examines how unpaid care work within family units and paid care work in the market are related to broader economic and political processes. A key focus of her research is the link between family change and economic inequality, with a particular interest on life-course shifts in wives' wage labor and the transformation of gender relations within families. She has published studies showing how changes in spousal economic homogeneity and spouses' division of housework increase economic inequalities across families. She is a co-investigator on a project funded by the Russell Sage Foundation that focuses on the transition to parenthood as a key life-course juncture shaping the link between spouses' homogeneity and inequality. Another of her current projects examines the effect of changes in wives' earnings on income inequality across families in 8 countries 1975-2015.



Pilar Gonalons-Pons received her BA in Sociology from the University of Barcelona (Spain) and her PhD in Sociology from the University of Wisconsin in Madison.

ALLISON K. HOFFMAN, JD

Allison Hoffman, an expert on health care law and policy, is a Professor of Law at University of Pennsylvania Law School and a Visiting Professor of Law and Oscar M. Ruebhausen Distinguished Senior Fellow at Yale Law School in Spring 2019. She is also a Senior Fellow at the Leonard Davis Institute of Health Economics at Penn.



Professor Hoffman's work examines some of the most important legal and social issues of our time, including health insurance regulation, the Affordable Care Act, Medicare and retiree healthcare expenses, and long-term care. In particular, her work questions the role of regulation in promoting health and shaping conceptions of risk and responsibility. She is a co-editor of the Oxford Handbook of U.S. Health Law.

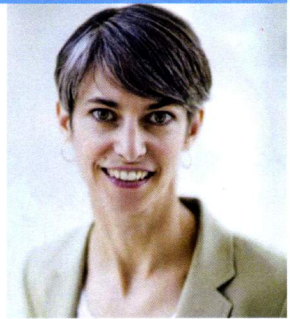
Hoffman received her AB summa cum laude from Dartmouth College and her JD from Yale Law School. She was a fellow at the Petrie-Flom Center for Health Law Policy, Biotechnology, and Bioethics at Harvard. Before entering academia, she practiced health law at Ropes & Gray LLP and provided strategic advice to corporations and nonprofit organizations as a consultant at The Boston Consulting Group and The Bridgespan Group.

MARY D. NAYLOR, PhD, RN, FAAN



Mary Naylor, Ph.D., RN, FAAN, is the Marian S. Ware Professor in Gerontology and Director of the NewCourtland Center for Transitions and Health at the University of Pennsylvania School of Nursing. For more than two decades, Dr. Naylor has led a multidisciplinary team of clinical scholars and health services researchers in generating and disseminating research findings designed to enhance the care and outcomes of chronically ill older adults and their family caregivers. She is the architect of the Transitional Care Model, a care management approach proven in multiple NIH clinical trials and foundation sponsored translational efforts to improve older adults' experience with care and health outcomes, while decreasing use of costly health services. Dr. Naylor is the 2016 recipient of AcademyHealth's Distinguished Investigator Award, a recognition of significant and lasting contributions to the field of health services research. She was elected to the National Academy of Medicine (NAM) in 2005. For eight years, she served as the national program director for the Robert Wood Johnson Foundation sponsored *Interdisciplinary Nursing Quality Research Initiative*. She recently completed six-year terms as a commissioner on the Medicare Payment Advisory Commission (MedPAC), board member of the National Quality Forum and member of the Agency for Healthcare Research and Quality's National Advisory Council. Currently, Dr. Naylor is a member of the NAMs Leadership Consortium on Value & Science-Driven Health Care and co-chairs NAMs Care Culture and Decision-Making Innovation Collaborative. Dr. Naylor also is a member of the RAND Health Board of Advisors, the Institute for Health Improvement's Scientific Advisory Group, and the Board of Trustees of the Dorothy Rider Pool Health Care Trust.

RACHEL M. WERNER, MD, PhD



Rachel Werner, MD, PhD, is Professor of Medicine at the University of Pennsylvania Perelman School of Medicine as well as Professor of Health Care Management at the Wharton School. She is the Executive Director of the Leonard Davis Institute of Health Economics and a practicing physician at the Philadelphia VA.

Over the last 15 years, Dr. Werner has built a foundational research program examining the effects of health care policies on health care delivery, using methods designed to draw causal inference from observational data. She has investigated the unintended consequences of quality improvement incentives, and was among the first to recognize that public reporting of quality information may worsen racial disparities.

Her research has been published in high-impact peer-reviewed journals, including *JAMA*, *Health Services Research*, and *Health Affairs*. Beyond publication, Dr. Werner has influenced policy as a member of the National Quality Forum's Expert Panel on Risk Adjustment and Socioeconomic Status and an advisor to the federal government on quality measurement and quality improvement incentives. She now serves on Pennsylvania's Nursing Home Quality Improvement Task Force. She is a Core Investigator with the VA HSR&D Center for Health Equity Research and Promotion (CHERP), and directs one of four national centers to evaluate the effectiveness of the VA's medical home.

Dr. Werner has received numerous awards for her work, including the Alice Hersh New Investigator Award from AcademyHealth, the Presidential Early Career Award for Scientists and Engineers, and the American Federation of Medical Research (AFMR) Outstanding Investigator Award. She is an elected member of the National Academy of Medicine.

She received her undergraduate degree from Macalester College, and her medical degree and doctoral degree in health economics from the University of Pennsylvania.

ABOUT THE LEONARD DAVIS INSTITUTE OF HEALTH ECONOMICS

The Leonard Davis Institute of Health Economics is the University of Pennsylvania's center for research, policy analysis, and education on the medical, economic, and social issues that influence how health care is organized, financed, managed, and delivered. LDI is a cooperative venture among Penn's health professions, business, and communications schools (Medicine, Wharton, Nursing, Dental Medicine, Law School, and Annenberg School for Communication) and the Children's Hospital of Philadelphia, with linkages to other Penn schools, including Arts & Sciences, Education, Social Policy and Practice, and Veterinary Medicine. LDI, founded in 1967, is one of the first university programs to successfully cultivate collaborative multidisciplinary scholarship.

EVENT CO-SPONSORS

School of Nursing
The Wharton School
Perelman School of
Medicine
School of Dental
Medicine
Annenberg School
Law School
Penn Alumni Relations
Wharton Graduate
Emeritus Society

